

An aerial photograph of a green roof installation. A wide, light-colored paved walkway runs diagonally from the top left towards the bottom right. The walkway is flanked on both sides by lush green vegetation, including tall grasses and small shrubs, planted in a grid-like pattern. Several people are walking along the path, and some are sitting on a small wooden bench on the right side. The scene is brightly lit, casting long shadows across the walkway.

**ASLA
LANDSCAPE
ARCHITECTURE
FIRM AWARD
NOMINATION**

**JAMES
CORNER
FIELD
OPERATIONS**



TABLE OF CONTENTS

NOMINATION LETTER	2
FIRM HISTORY	6
RECOGNITION & ACHIEVEMENTS	10
PRINCIPAL BIOGRAPHIES	14
SELECTED WORK	20

Established over 20 years ago, James Corner Field Operations is led by James Corner with eight principals and 80 design professionals, trained in architecture, landscape architecture, urban design and urban planning. Women make up 50% of our studio and two-thirds of our senior leadership. The firm has representatives from eleven countries who cover 14 languages, including French, Spanish, Russian, Portuguese, Hebrew, Korean, Japanese, Mandarin and Cantonese. We come from a multitude of social, economic, religious, and cultural backgrounds and are united by our dedication to creating a vibrant public realm in cities and countrysides, worldwide.

ASLA Board of Trustees
American Society of Landscape Architects
636 Eye St., NW
Washington, DC 20001

Re: Nomination of James Corner Field Operations for Firm of the Year

Dear Trustees,

It gives me great pleasure to nominate James Corner Field Operations for the ASLA Design Firm Award. There is an impressive roster of previous recipients of this Award, and Field Operations, given their national and international reputation, body of work, and professional depth, would round out that august group. The firm has produced some of the profession's most lauded built work, including New York's much-acclaimed High Line, and proven to be a leader in increasing landscape architecture's visibility and relevance, especially in cities around the country. In my view they are a premier design practice, working at the highest standards of excellence, and are exceptionally deserving of recognition by the ASLA with the Firm Award.

I have known James Corner and his partners at Field Operations for nearly twenty years, first as a client when I served as New York's Commissioner of Parks and Recreation, and more recently in my work with the Trust for Public Land. In 2000, the firm won an international design competition for the conversion of Fresh Kills landfill on Staten Island to new parkland – a herculean task given the sheer size of the area (over 4 square-miles) and the myriad technical and regulatory challenges. The firm is still working on this project, 18 years later, and continues to excel in terms of their creativity, professional responsiveness, and overall leadership. The firm also won the 2004 international design competition for the High Line. Field Operations put forward a beautifully imaginative vision, led an impressive team of collaborators and consultants, negotiated multiple public agency reviews, and designed, detailed, and built what is truly one of the most important works of landscape architecture this century. I was privileged to work closely with Jim and his associates on the High Line, and I was impressed by the firm's vision, sensitivity to multiple clients, and drive to build a unique, 21st century landscape.

The firm has gone on to win many other prestigious design commissions that have led to impressive built projects: Chicago's Navy Pier and Polk Park, Brooklyn's Domino Park, Minneapolis's Nicollet Mall, Santa Monica's Tongva Park, Cleveland's Public Square, and Philadelphia's Race Street Pier, among others. They are also leading the massive transformation of Seattle's Central Waterfront, a project that involves transportation, urban planning, and engineering as well as landscape architecture and ecological restoration. Another landmark project is the Presidio Tunnel Tops Park in San Francisco, an enormously beautiful and significant site overlooking the Bay. This list cites highly visible and important projects that are almost all in the public sector, requiring special skills with communication and political sensitivity, for which the team at Field Operations demonstrates a terrific aptitude.

In addition, the firm has an impressive roster of institutional clients: Cornell University, where Field Operations planned and designed the new site for the Cornell-Technion Campus on Roosevelt Island; Columbia University, where they designed the new Manhattanville Campus; Princeton University, where they are leading the Lake Campus Master Plan and campus projects; and Yale University, where they are working on a revamp of Yale's North Campus. In July 2016 they produced an amazing installation in the National Building Museum Great Hall – "Icebergs," which spoke to environmental climate change issues, as well as producing a wonderful interactive space for visitors. In all their design projects, we see elegance, beauty, a special sensitivity to place and culture, and an overall intelligence that deepens with time.

James Corner Field Operations received the Cooper Hewitt National Design Award in 2010, as well as various professional awards from the AIA, ASLA, ULI, and others. James Corner has been recognized by the Academy of Arts and Letters, exhibited at both MoMA and London's Royal Academy of Art, and serves on the Board of Urban Design. Lisa Switkin is a Fellow of the American Academy in Rome and is President of LAF. Many of the other senior figures in the firm (Richard Kennedy ASLA, Tatiana Choulaka ASLA, Karen Tamir, Sarah Astheimer ASLA, Jayyun Jung, Hong Zhou, and Isabel Castilla ASLA) continue to play important leadership roles both inside and outside of the firm. In fact, one of the most impressive things about Field Operations in my view is the depth of their bench – they have been able to hire and retain some of the most talented, diverse and capable professionals I know. The firm now comprises 80 professionals, with offices in New York, San Francisco, Philadelphia, and Shenzhen. It is as impressive a business organization as it is a designer powerhouse.

Finally, I would say that James Corner Field Operations is not only an exceptional design firm, but also a leading-edge model in terms of raising the profile of the profession more broadly. James is Emeritus Professor of Landscape Architecture and Urbanism at the University of Pennsylvania, where he was Chairman from 2000-13, and he and his team continue to teach, write, speak, and contribute in ways that help to advance the field.

One of the most memorable talks on landscape architecture I have witnessed was when, at the LAF Landscape Architecture Summit at the University of Pennsylvania, Jim put up a slide of Bosch's "Garden of Earthly Delights" and gave a 15-minute talk on the transformative power and primacy of beauty in landscape design, and as a guiding light of livable cities. The firm raises the bar for the profession. Their efforts to help educate and push the profession to new horizons is a distinguishing mark of this firm, and further supports why I believe they should be recognized with the ASLA Firm Award.

In conclusion, I enthusiastically urge you to properly recognize James Corner Field Operations significant contributions to landscape architecture, to parks, to cities, and to society with this year's ASLA Firm Award.

Sincerely,



Adrian Benepe, Hon. ASLA
Senior Vice President & Director of City Park Development



"For more than a quarter century, James Corner Field Operations has been an inspiring thought leader and a game-changing landscape architectural design practice with an intense commitment to urban forms and projects defined by their daring response to site and context. They often lead multi-disciplinary teams to bring both rigor and delight to their projects."

Marilyn Jordan Taylor, FAIA, AICP
Professor of Architecture and Urban Design, University of Pennsylvania

"James Corner Field Operations is an exceptionally creative and community responsive design studio, imbued with a deep sense of civic purpose and public good. The entire firm is visionary, inspiring, and engaging. Their designs are remarkably authentic, illuminating the values of the place while amplifying its public benefits. They bring poetry, joy and grace to their work and are collaborators in the very best sense of the word."

Greg Moore
Special Projects Executive & CEO Emeritus, Golden Gate National Parks
Conservancy



FIRM HISTORY

Founded in 1999, James Corner Field Operations is a leading-edge landscape architecture and urban design practice based in New York City, with offices in San Francisco, Philadelphia and Shenzhen. Field Operations is renowned for strong contemporary design across a variety of project types and scales, from large urban districts, master plans and complex planning sites, to small well-crafted, detailed design projects. Regardless of scale, there is a special commitment to the design of a vibrant and dynamic public realm, informed by the ecology of both people and nature, rooted in place and context.

James Corner, FASLA, brings 30 years of experience in the field and directs all design projects in the office, supported by Senior Principals Lisa Switkin and Richard Kennedy, along with six other Principals. The firm began in 1999 as a small group of three people, working on the design of the French Embassy Garden in New York, the North Delaware Riverfront Master Plan in Philadelphia, and the design competition entry for Downsview Park, Toronto. The firm quickly grew with the procurement of the Freshkills Park Master Plan in 2000, the result of an international competition to transform 2,200 acres of waste-landfill set in wetlands on Staten Island to a new public park. And, soon thereafter, Field Operations won the international design competition for New York's famed High Line in 2004—a 1.5 mile-long elevated rail structure transformed into a magnificent new public promenade and garden in the sky. Throughout the 2000's, projects continued to accrue, many through design competitions, and the firm's growth responded with strong leadership, bold vision and the highest level of professional delivery. The firm earned a reputation for leading complex multi-disciplinary teams on high-visibility public realm projects, including Seattle's Central Waterfront; Santa Monica's Tongva Park; Cleveland's Public Square; Chicago's Navy Pier; Memphis' Shelby Farms Park; London's South Park at Queen Elizabeth Olympic Park; Hong Kong's Victoria Dockside; and Brooklyn's Domino Park. Current projects include the Tunnel Tops at the Presidio, San Francisco; the South Bay Resiliency Initiative, San Francisco; the Cultural Arts District and Central Park, Doha; and the new city of Qianhai, Shenzhen, China.

Our project types range from entire sectors of cities, to urban development districts, institutional campuses, urban waterfronts, large public parks, urban squares, public places, roof terraces and small intimate gardens. This range of project types exemplifies our capacity to think creatively in terms of ecology, economics, development and programming, and experientially in terms of physical design, spatial experience and the poetics of place.

Field Operations' work has been recognized by both peer groups and those outside the field of landscape architecture, receiving multiple awards from the American Society of Landscape Architects, the American Institute of Architects, the Urban Land Institute, the BALI Awards, Architizer, and the American Planning Association; as well as many more. The firm was awarded the Cooper Hewitt National Design Award in 2010; and James Corner has received the American Academy of Arts and Letters Award in Architecture, among other honors.

The firm's work has been published and exhibited internationally, including at the Venice Biennale; the Royal Academy of Art, London; the Museum of Modern Art, New York; the National Building Museum, Washington DC; and the Cooper Hewitt National Design Museum. Field Operations was named one of the world's most innovative companies by Fast Company (2012) and one of the most influential design firms by Time (2010).

Projects include the following:

built work:

High Line, New York, NY
Victoria Dockside, Hong Kong, China
Navy Pier, Chicago, IL
South Park Plaza at Queen Elizabeth Olympic Park South, London, England
Elliott Bay Seawall and Public Realm, Seattle, WA
Tongva Park and Ken Genser Square, Santa Monica, CA
Taopu Central Park, Shanghai, China
Shelby Farms Park, Memphis, TN
Cornell Tech Campus, Roosevelt Island, NY
Navy Yards Central Green, Philadelphia, PA
Freshkills Park, Staten Island, NY (Phase 1 projects)
Public Square, Cleveland, OH
MGM Mirage City Center, Las Vegas, NV
Race Street Pier and Connector, Philadelphia, PA
Knight Plaza, Miami, FL
Greenpoint Landing Waterfront, Brooklyn, NY
Domino Park, Brooklyn, NY
Columbia University Manhattanville Small Square, New York, NY
Columbia University Muscota Marsh, New York, NY
South Street Seaport Pier 17, New York, NY
Nicollet Mall, Minneapolis, MN
Beekman Plaza, New York, NY
Citi Plaza, New York, NY

unbuilt or in-progress:

Resilient by Design: South Bay Sponge, San Francisco Bay Area, CA
River Street Master Plan and Waterfront Park, Brooklyn, NY
Lincoln Road District Master Plan, Miami Beach, FL
The Underline, Miami, FL
Manhattan West, New York, NY
West End Square, Dallas, TX
Gansevoort Peninsula, New York, NY
Presidio Tunnel Tops, San Francisco, CA
Georgetown Canal Plan, Washington, D.C.
Northeast False Creek, Vancouver, BC, Canada
Guiwan Water Finger Park, Shenzhen, China
Riverfront Park, Newark, NJ
Pier 70, San Francisco, CA
Qatar Museums Cultural District, Doha, Qatar
Princeton University Lake Campus Master Plan and Campus Projects, Princeton, NJ
Yale University Sachem's Wood, Gibbs' Court and Peabody Museum, New Haven, CT
Oakland A's Ballpark and Master Plan, Oakland, CA
Oyster Point Waterfront Park and Plaza, South San Francisco, CA
San Pedro Public Market and Promenade, Los Angeles, CA
Central Waterfront, Seattle, WA
Qianhai Water City, Shenzhen, China
Shum Yip Upper Hills Development, Shenzhen, China
West Bund Art District, Shanghai, China
Boston Seaport Master Plan and Harbor Square Park, Boston, MA
Lincoln Yards North, Chicago, IL
Hong Kong University of Science and Technology New Campus, Guangzhou, China



SHELBY FARMS PARK
MEMPHIS, TN
2010, 2011, 2016

"James Corner Field Operations has achieved national, if not international, stature with signature projects such as New York's High Line, Santa Monica's Tongva Park, and Chicago's Navy Pier. What impresses me is the depth inside the firm; it is not just one leader but an exceptionally talented and committed group of professionals."

Robert Hammond
Executive Director, Friends of the High Line



RECOGNITION & ACHIEVEMENTS

HIGH LINE
NEW YORK, NY
2009, 2011, 2014, 2019

RECOGNITION & ACHIEVEMENTS

Selected Firm Awards

Cooper Hewitt National Design Award, 2010
Time "Ten Most Influential Designers," 2007
American Academy of Arts and Letters, Award in Architecture, 2004
Esquire Magazine Best and Brightest Award, 2002
Daimler-Chrysler Design Award for Innovation in Design, 2000
Architectural League of New York Design Award, 2000

Selected Project Awards

2020

ULI New York Award for Excellence in Civic Development, Finalist: Domino Park
AIANY Urban Design Honor Award: Domino Park
AIANY Architecture Merit Award: Manhattan West
AIA Regional & Urban Design Award: Cornell Tech Campus Framework Plan

2019

Hong Kong Institute of Urban Design (HKIUD) Merit Award, Built Project: Tsim Sha Tsui Waterfront Revitalization
ULI Global Awards for Excellence, Winner: Cornell Tech Campus Framework Plan & Phase I Site Development
ULI Global Awards for Excellence, Finalist: Pier 17 at the Seaport District
World Architecture Festival Awards: Tsim Sha Tsui Waterfront Revitalization
ULI New York Award for Excellence in Institutional Development: Columbia University Manhattanville Campus, Phase I
ASLA-NY Award of Excellence: Domino Park
AIA Regional & Urban Design Award: Shelby Farms Park

2018

ASLA Honor Award: Tongva Park and Ken Genser Square
Regional Plan Association Transformative HKILA Gold Award: Tsim Sha Tsui Waterfront Revitalization–Salisbury Garden
APA Great Places in America: Public Square, Cleveland
Hong Kong Institute of Urban Design Merit Award: Tsim Sha Tsui Waterfront Revitalization

2017

Veronica Rudge Green Prize in Urban Design: High Line
Chicago Design Awards, Gold, Architecture Mixed-Use: Navy Pier
ASLA Honor Award: Elliott Bay Seawall Replacement Project
ASLA-NY Honor Award: Navy Pier South Dock and Polk Bros. Plaza
ACEC Engineering Excellence Awards, Platinum: Elliott Bay Seawall

2016

The Chicago Athenaeum American Architectural Awards: Tongva Park and Ken Genser Square
NYC Public Design Commission, Design Award: High Line Spur
ULI Philadelphia's Annual Willard G. Rouse III Award for Excellence: Navy Yards Central Green
ASLA-NY Honor Award: The Underline Master Plan, Miami
ASLA-NY Merit Award: Navy Yards Central Green

2015

APA National Planning Achievement Award: Tongva Park and Ken Genser Square
ULI Award Finalist: Tongva Park and Ken Genser Square
MIPIM Awards, Special Jury Award: South Park Plaza at Queen Elizabeth Olympic Park
ASLA-NY Honor Award: High Line at the Rail Yards
Open Space Alliance (OSA) for North Brooklyn Design Award: Greenpoint Landing
Architizer A+ Awards, Landscape & Planning | Public Park: Tongva Park

2014

BALI National Landscape Award: South Park Plaza at Queen Elizabeth Olympic Park
AIA | CC Urban Design Honor Award: Tongva Park and Ken Genser Square
AIA | LA Honor Award: Tongva Park and Ken Genser Square
City Parks Alliance, Frontline Parks Award: Tongva Park and Ken Genser Square
APA California Award of Excellence: Tongva Park and Ken Genser Square
Public Design Commission of the City of New York, Award for Excellence in Design: Cornell Tech Campus

2013

ASLA Honor Award: Seattle Central Waterfront
ASLA Honor Award: High Line, Section 2
NYC Public Design Commission, Excellence in Design Award for Green Infrastructure: Muscota Marsh

2012 and earlier

APA National Planning Achievement Award for Urban Design: High Line, 2012
SARANY Visionary Landscape Award: High Line, 2012
AIANY Merit Award: Qianhai Water City, 2011
ASLA Honor Award: High Line, Section 1, 2010
AIA Urban Design Honor Award: High Line, 2010
D&AD Black Pencil Award: High Line, 2010
*Wallpaper** Life-Enhancer of the Year Award: High Line, 2010
New York Landmarks Conservancy Lucy G. Moses Preservation Project Award: High Line, 2010
New York City Art Commission Award, Excellence in Design: High Line, 2005

Selected Competition Wins (First Prize)

International Friendship Park, Shenzhen, China, 2019
Bao'an Axis Park, Shenzhen, China, 2019
Xiangmi Lake Urban Design, Shenzhen, China, 2018
Bao'an Waterfront Culture Park Phase 2, Shenzhen, China, 2017
Guiwan Water Finger Park, Shenzhen, China, 2016
Presidio Parklands, San Francisco, CA, 2015
Nicollet Mall, Minneapolis, MN, 2013
Navy Pier Pierscape, Chicago, IL, 2012
Queen Elizabeth Olympic Park, South Park Plaza, London, England, 2011
Planning of the Qianhai Region, Shenzhen, China, 2010
Shelby Farms Park Competition, Memphis, TN, 2008
Paterson Great Falls Park Competition, 2006
Syracuse Connective Corridor Competition, 2006
Chuncheon Urban Redevelopment and Open Space Design Competition, Korea, 2006
Guggenheim Museum & Arts Park Design Competition, Guadalajara, 2005
The High Line Design Competition, New York, NY, 2004
Freshkills Landfill to Landscape Design Competition, New York, NY, 2001

Recent Media Coverage

Fast Company, December 12, 2019, "This new coastal Brooklyn park is designed to thrive as sea levels rise" by Adele Peters on River Street Waterfront Master Plan in North Brooklyn.

The New York Times, November 24, 2019, "33 Ways to Remember the 2010s." Michael Kimmelman recognizes the High Line with "The most influential architecture of the decade wasn't a building."

Forbes, November 7, 2019, "Landmark Presidio Tunnel Tops Project Breaks Ground Today in San Francisco" by Kim Westerman.

The Guardian, September 16, 2019, "The best architecture of the 21st century" by Oliver Wainwright, including the High Line.

Architectural Record, June 7, 2019, "Lush Hillock and Public-Art Plinth Culminate NYC's High Line" by James S. Russell on the High Line Spur opening.

City of East Palo Alto press release, June 5, 2019, "East Palo Alto Receives \$17 million for SAFER Bay Levee Project to Protect Against Sea Level Rise," recognizing the Resilient by Design Challenge as "instrumental in increasing public awareness of this need."

Crain's, January 31, 2019, "Public beach could be coming to Manhattan" by Joe Anuta on Field Operations' selection to design Gansevoort Peninsula in Hudson River Park.

CNN, January 30, 2019, "Avenue of Stars: Hong Kong's spectacular waterfront promenade reopens" by Maggie Hiufu Wong on the Avenue of Stars.

The Seattle Times, January 16, 2019, "As the Viaduct tumbles, a dynamic, carefully designed living landscape waits to emerge" by Lorene Edwards Forkner on the construction of Seattle's Central Waterfront.

Architectural Record, August 2018, "Heart of the Matter" by Beth Broome on Shelby Farms Park in Memphis, TN.

The New York Times, June 8, 2018, "New Parks Sprout Around New York" by Michael Kimmelman on Domino Park's opening.

Wall Street Journal, September 18, 2017, "Campus of the Future" by Julie Iovine on Cornell Tech Campus.

Chicago Tribune, July 10, 2017, "Navy Pier adds new waterfront performance venues" on Navy Pier.

CityLab, February 17, 2017, "The Wild Comeback of New York's Legendary Landfill" by Laura Bliss on Freshkills Park.



"James Corner is a remarkably important anchor of contemporary landscape practice with profound influence as a designer, an academic, and a public figure. The fabulous High Line has replaced the Empire State Building as NYC's most popular tourist attraction which should make us all proud. As a professional James is exceptionally collegial and his firm has a world class reputation."

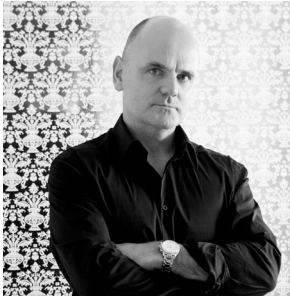
Michael Van Valkenburgh, FASLA
President & CEO, Michael Van Valkenburgh Associates

An aerial photograph of a park landscape design. A winding river flows through the center. A stone-paved path with a scalloped edge winds through the park, crossing the river via three wooden bridges. The landscape is filled with various green plants, trees, and some flowering shrubs. The overall design is organic and integrated with the natural environment.

PRINCIPAL BIOGRAPHIES

TAOPU CENTRAL PARK
SHANGHAI, CHINA
2019

JAMES CORNER, RLA, FASLA Founder & CEO



James Corner is Founder and CEO of James Corner Field Operations. James has devoted the past 30 years to advancing the field of landscape architecture and urbanism, primarily through his leadership on high-visibility, complex urban projects around the world, as well as through teaching, public speaking, and writing.

Important public realm design projects include New York's highly-acclaimed High Line; London's South Park at Queen Elizabeth Olympic Park; Santa Monica's Tongva Park; Chicago's Navy Pier; Cleveland's Public Square; Philadelphia's Race Street Pier; Seattle's Central Waterfront; Hong Kong's Salisbury Gardens and Avenue of the Stars; and Shenzhen's City of Qianhai, a new coastal city for 3 million people. He is currently leading the design for San Francisco's Presidio Tunnel Tops, a 14-acre new park connecting the Main Post of the Presidio to Crissy Field and the Bay; the new Qatar Museums Cultural District and Park in Doha; and the Arts District West Bund Waterfront in Shanghai.

James's work has been recognized with the Cooper Hewitt National Design Award; the American Academy of Arts and Letters Award in Architecture; the Daimler-Chrysler Design Excellence Award; and the AA&D Black Pencil Award. His work has been published broadly and exhibited at the New York Museum of Modern Art; the Cooper-Hewitt Design Museum; the National Building Museum; the Royal Academy of Art in London; and the Venice Biennale.

His books include *The High Line: Foreseen/Unforeseen* (Phaidon, 2015); *The Landscape Imagination* (Princeton, 2014); *Recovering Landscape* (Princeton, 1999); and *Taking Measures Across the American Landscape* (Yale, 1996). He was named by Time as one of "Ten Most Influential Designers;" by Fast Company as one of the "Top 50 Innovators;" and has been featured in *Monocle*, *The Atlantic*, *Wallpaper*, *Cultured*, *National Geographic*, *Bloomberg Businessweek*, and *The New York Times*, among other prominent publications.

He is a frequent public speaker, and has spoken at Bloomberg Design Week, as well as many special lectures, including the Sir Geoffrey Jellicoe Lecture for the Landscape Institute in London; the Hawksmoor International Lecture at Greenwich, London; and the Daniel Kiley Lecture at Harvard. James is emeritus Professor of Landscape Architecture and Urbanism at the University of Pennsylvania School of Design, where he has served on the faculty since 1989, and as Professor and Chairman 2000–2013.

He received a B.A (First Hons) from Manchester Metropolitan University; an M.L.A/U.Des. from the University of Pennsylvania School of Design; an Honorary Doctorate in Architecture and Engineering (Dr.-Ing.e.h.) from the Technical University of Munich; and a Doctor of Design (honoris causa) from Manchester Metropolitan University. He sits on the Board of the Urban Design Forum and the Government Advisory Board of Shenzhen.

LISA SWITKIN, FAAR, ASLA
Senior Principal



Lisa leads many of Field Operations' most complex public realm design projects, and is widely regarded as one of the field's most effective leaders. With a background in urban planning and landscape architecture, Lisa has a special commitment to improving cities through the design of a holistic and vibrant public realm, inspired by place, people, and nature. For 20 years, Lisa has helped to reshape New York City's public spaces including the design and delivery of the High Line since 2004, Domino Park in Brooklyn, the transformative master plan for Staten Island's Freshkills Park, the public spaces at South Street Seaport and Gansevoort Peninsula in Manhattan, and River Street's master plan and waterfront park. Other signature projects include Santa Monica's Tongva Park; Philadelphia's Race Street Pier; Nicollet Mall in Minneapolis; Newark's Riverfront Park; The Underline in Miami; Shelby Farms Park in Memphis; the master plan for Seattle's Central Waterfront; Boston Seaport; and the South Main District in Houston.

Lisa currently serves as the President of the Landscape Architecture Foundation. In 2008, she was a Rome Prize recipient at the American Academy in Rome. She has a Bachelors in Urban Planning with a focus on Community Development Planning from the University of Illinois, and a Masters in Landscape Architecture from the University of Pennsylvania. Lisa has taught graduate level design studios and lectured at universities, symposiums, foundations and institutions around the world.

RICHARD KENNEDY, RLA, ASLA
Senior Principal



Leading many of James Corner Field Operations' most important public realm and urban design projects, Richard is widely regarded as one of the field's most effective designers and heads up Field Operations' design office in San Francisco. With nearly 20 years of professional experience, Richard is currently leading the design of Presidio Tunnel Tops and Pier 70 in San Francisco; the Oyster Point Waterfront in South San Francisco; the San Pedro Promenade and Public Market in Los Angeles; and the new Oakland A's Ballpark and Master Plan in Oakland. Recently, Richard led the Field Operations team in the Resilient by Design Bay Area Challenge, a year-long effort to holistically shape a framework for adaptation in the face of sea level rise in the Bay Area.

Richard also led the design and implementation of Cleveland's Public Square; Shelby Farms Park in Memphis; the award-winning South Park at Queen Elizabeth Olympic Park in London; Rotterdam's Urban Metabolism exhibition for the 2014 International Architectural Biennale in the Netherlands; the Navy Pier competition in Chicago; the award-winning master plan design of Qianhai in Shenzhen, China; concepts for the public realm Earl's Court Development in London; the concept design of the Atlanta BeltLine, 22 miles of an industrial rail corridor; Lake Ontario Park Master Plan in Toronto; and the East River Master Plan.

Richard holds a Master of Landscape Architecture degree with distinction from Harvard University, where he was awarded the Jacob Weidenmann Prize for Excellence in Design, and a Bachelor of Landscape Architecture degree from Cornell University. He has taught and lectured at the University of Pennsylvania School of Design and other design institutions.

SARAH WEIDNER ASTHEIMER, RLA, ASLA
Principal



From innovative community workshops to design and construction administration, Sarah has successfully led projects that reflect strong contemporary design and a commitment to sustainable best management practices and ideals.

With over 14 years at Field Operations, Sarah leads the office's Philadelphia studio and is the Principal-in-Charge of several significant public realm projects, including the Georgetown Canal Plan in Washington, D.C., Lincoln Yards in Chicago, a media company campus in Los Angeles, and the master plan for the John F. Kennedy Center for the Performing Arts in Washington, D.C. Sarah was the project manager and lead designer for a massive transformation of Chicago's Navy Pier, the award-winning Tongva Park in downtown Santa Monica, Central Green at the Philadelphia Navy Yards, and the Woodland Discovery Playground in Memphis. Sarah's strong leadership and impeccable organizational skills translated into on-time and on-budget delivery of these highly complex projects.

Sarah works to promote the advancement of sustainability within the field of Landscape Architecture and was significantly involved with the development of SITES®, the most comprehensive international system for developing and evaluating sustainable landscapes. Chicago's Navy Pier was the first gold-certified SITES® project and the Woodland Discovery Playground was the first certified pilot project.

ISABEL CASTILLA, ASLA
Principal



Educated in both architecture and landscape architecture, Isabel brings exceptional attention to design creativity, detailing, and construction implementation. Fully bilingual in Spanish and English, Isabel is a strong communicator, with deep experience leading extensive public engagement efforts and complex multi-agency approvals for large public realm projects.

She is currently the Principal-in-Charge for Dallas' West End Square, a 0.75-acre urban square at the center of Dallas' historic West End; Phases 1 and 2 of New York's High Line Section 3; the High Line's 18th Street Plaza; the master plan and implementation for Phase 1 of the historic Lincoln Road District in Miami Beach; and the master plan and Phase 1 of The Underline in Miami.

She was previously responsible for the design and delivery of the ICEBERGS installation in the National Building Museum in Washington, D.C. and Knight Plaza. Isabel also worked on the master plan and vision for a 128-hectare decommissioned defense site in Australia; the design of the 15-acre Baker Field, a waterfront park on the Harlem River, New York; the East River Master Plan, a 9-acre commercial and residential development with more than six acres of public open space overlooking the East River in Manhattan; and many smaller rooftop terraces and gardens around the country.

TATIANA CHOULIKA, RLA, ASLA
Principal



With over 30 years of professional international experience in planning and design, Tatiana oversees some of the firm's most complex projects. She is currently managing the planning and design of Seattle's Central Waterfront; the open space design for the Northeast False Creek waterfront in Vancouver; the design and implementation of Freshkills Park in Staten Island; and the design of open spaces for Columbia University's new Manhattanville Campus, Yale University Science Hill, and Princeton University's campus.

Throughout her career, Tatiana has led projects of various sizes and scope, in different countries and climates, for both private and public clients, including the Harlem Piers Waterfront Park in New York, and the College of Human Ecology at Cornell University in Ithaca, New York; as well as the 54-acre 20th Century Fox Studios in Los Angeles and the 230-acre Sultan City for Humanitarian Studies in Riyadh, Saudi Arabia. She excels with multi-disciplinary teams and is able to carry a project through all phases of design, from concept to construction.

JAYYUN JUNG, RLA, ASLA
Principal



Jayyun is a registered landscape architect and urban designer at Field Operations and has played a leading role in many of our most complex international projects. Jay led the design and delivery for the award-winning Salisbury Gardens and Tsim Sha Tsui Waterfront, as well as the redesign of the iconic Avenue of Stars in Hong Kong. Jay is currently the Principal-in-Charge for Field Operations' work on Manhattan West in New York, which features over two acres of open space on structure amidst a group of mixed-use towers.

Previously, Jayyun was the lead project designer and manager for a series of projects, including the Hyundai Hotel in South Korea; Race Street Pier, a recreational pier on Philadelphia's Delaware Riverfront; and the open space master plan and design of Columbia University's Manhattanville Campus, a \$56 million open space and streetscape project. He has overseen the design of numerous projects in South Korea, including Busan Civil Park, the Samsung Campus Master Plan, Chuncheon G5, Gwanggyo Lakeside Park, Magok Harbor Park, and Multi-Functional Administrative City (MAC). Jayyun's built projects, such as the Macallen Building and the Battery Bosque and Promenade, demonstrate Jayyun's creativity and technical proficiency with details and construction, as well as his in-depth knowledge of horticulture.

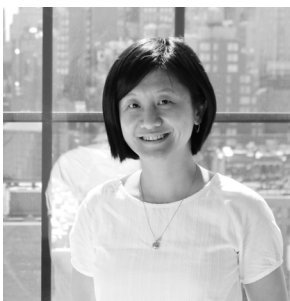
KAREN TAMIR, RLA, ASLA
Principal



Karen is a registered landscape architect and urban designer at Field Operations, bringing over 18 years of professional experience in landscape architecture. Karen is recognized for her experience in designing and implementing major projects throughout New York City, especially along the waterfront, addressing resiliency and zoning considerations.

Karen's projects include Hudson River Park's Gansevoort Peninsula in Manhattan; MetroTech Commons in Brooklyn; Newark's Riverfront Park; Greenpoint Landing Waterfront Park in Brooklyn; Domino Park on the Brooklyn waterfront in Williamsburg, New York; and Cornell Tech's new campus on New York's Roosevelt Island, one of the most environmentally friendly and energy-efficient campuses in the world. She led the site framework plans for Pratt Pullman District in Atlanta; Lapid Framework Plan in Tel Aviv, Israel; Boston's Seaport District; and Columbia University's Muscota Marsh project on the Harlem River.

HONG ZHOU, RLA, LEED AP
Principal



Hong is a registered landscape architect and urban designer at Field Operations with over 17 years of experience practicing in landscape and architecture, and has played a leading role in many of our most complex large-scale urban projects in the U.S. and China. Hong is currently the Principal-in-Charge for many China projects, including Hong Kong University of Science and Technology's New Campus in Guangzhou, a 300-acre campus development, Qianhai Guiwan Water Finger Park in Shenzhen, the first finger park to be constructed in the Qianhai region; and Taopu Central Park, a 237-acre park in Shanghai.

Hong was previously the lead designer and project manager for Knight Plaza; the Wolf River pedestrian bridge at Shelby Farms Park in Memphis; Manhattan West, Manhattan's 42-acre mixed-use development in Midtown; for Dachong Village, a 31-acre mixed-use development; and multiple mixed-use development projects in Shenzhen. She led several winning entries for major design competitions in China, including one for Qianhai's Regional Urban Planning International Consultancy in Shenzhen; the Xiong'an Boot Area Urban Design International Consultancy in Hebei; Guiwan Water Finger Park's International Competition and Xiangmi Lake's Urban Design International Competition in Shenzhen.



"Through their masterfully crafted designs, James Corner Field Operations has elevated how people experience the landscape offering a creative and memorable celebration of place. With a portfolio of highly recognizable projects of international acclaim, this firm is pushing the envelope of complex design solutions that broadens the reach of landscape architecture with beautiful places that will endure through time."

Jennifer Nitzky, RLA, ASLA
Trustee and Past President, ASLA NY Chapter



**SELECTED
WORK**

**"ICEBERGS" SUMMER INSTALLATION AT THE NATIONAL BUILDING MUSEUM
WASHINGTON, DC
2016**



The High Line, New York, NY
2004–present (2009, 2011, 2014, 2019)
ASLA Honor Award 2011, 2013

“An instant landmark of landscape architecture [...] it is, hands down, the most influential design project of the last decade.”
—Michael Kimmelman, Architecture Critic for *The New York Times*



Tongva Park and Ken Genser Square, Santa Monica, CA
2013
ASLA Honor Award 2018

"The project is unquestionably a rare example of farsighted urban planning in Southern California, which may in the end be its most important legacy."
—Christopher Hawthorne, *Los Angeles Times*



Freshkills Park, Staten Island, NY
2004–present

“Freshkills, once a daily dumping ground, will become a showcase of urban renewal and sustainability.”
—Michael Bloomberg, Former Mayor of New York City



Navy Yards Central Green, Philadelphia, PA
2015

"This unique environment has become one of the nation's leading places to work, creating even more reasons for innovative companies from around the world to move to Philadelphia."
—Michael A. Nutter, Former Mayor of Philadelphia



Navy Pier, Chicago, IL
2016, 2017

"The redevelopment of Navy Pier is vital to our ongoing efforts to attract 55 million visitors annually to the City of Chicago by 2020, creating new jobs and injecting millions of dollars into our local economy."
—Rahm Emanuel, Former Mayor of Chicago



Shelby Farms Park, Memphis, TN
2010, 2011, 2016

"Shelby Farms Park is the lynchpin for the greening of Memphis."
—Laura Wolff Morris, Former Executive Director of Shelby Farms Park Conservancy



Public Square, Cleveland, OH
2016

"Today, new generations of Clevelanders have embraced Public Square as their reborn town common, the city's sacred ground for free speech and public discourse."
—Erick Trickey, *Experience*, Northeastern University



Taopu Central Park, Shanghai, China
2019

"It is not only a beautiful garden, but a big sustainable ecological system as well.
It will serve as an urban 'green lung.'"
—Xu Wei, *Shanghai Daily*



Victoria Dockside, Hong Kong, China
2019

"The new art and design district will reinvigorate the Victoria harbourfront and create the most exciting new neighbourhood for both Hong Kong residents and the city's 60 million annual visitors."
—Adrian Cheng, CEO of New World Development Company Limited



Domino Park, Brooklyn, NY
2018

"The revitalization of the 160-year-old industrial Williamsburg waterfront deftly weaves the site's history together with the park's programming while simultaneously protecting it from future floods."
—Jonathan Hilburg, *The Architect's Newspaper*